

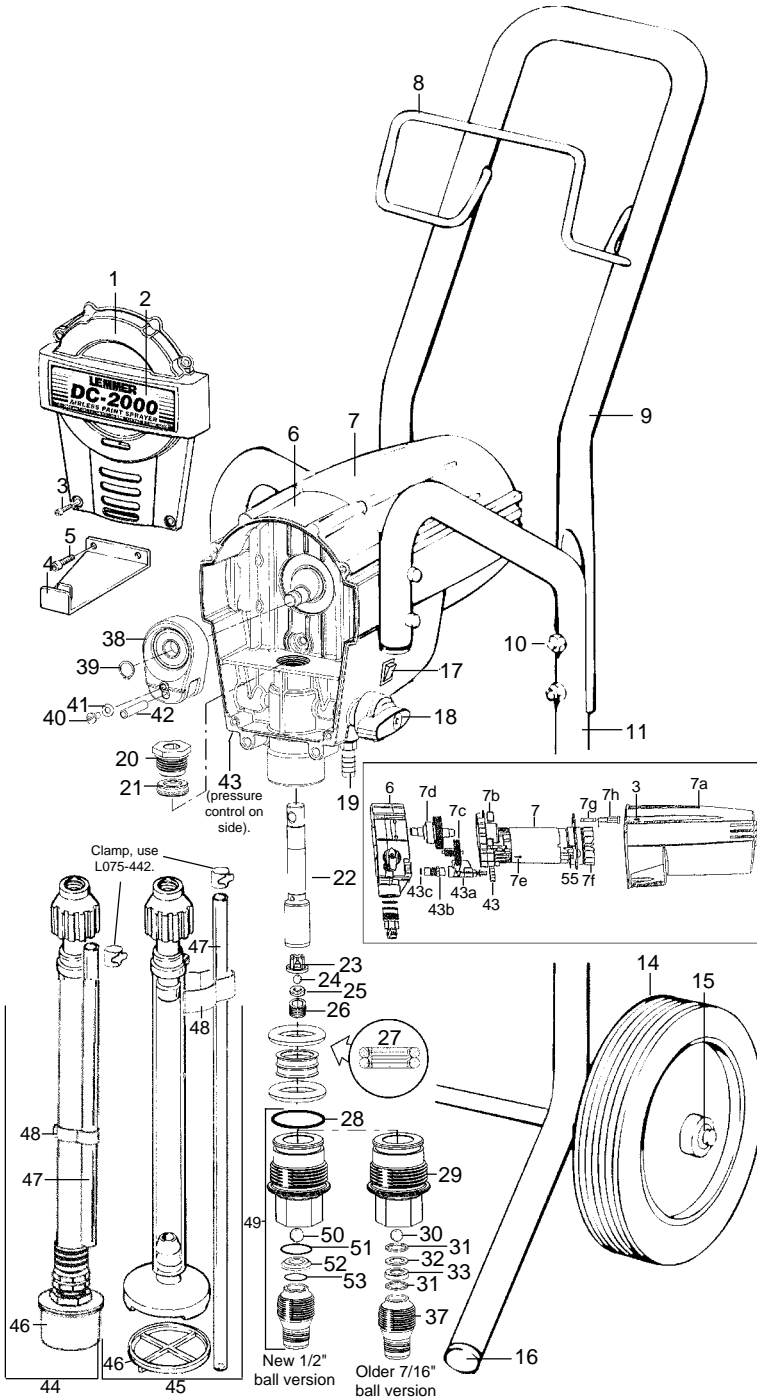
PARTS LIST & DIAGRAM



DC-2000

Pos.	Part nos.	Description	Qty.
	L045-002	DC-2000 airless piston pump on cart	
1	L045-601	Front cover	1
2	L045-690	Front cover decal	3
3	L045-603	Screw	4
4	L045-604	Pail hook	1
5	L045-605	Bolt, pail hook	2
6	L045-606	Main pump housing	1
7	L045-607	Motor (incl. fan)	1

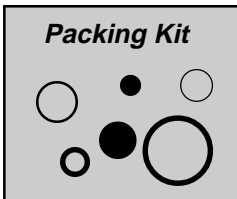
Pos.	Part nos.	Description	Qty.
7a	L045-608	Motor shroud	1
7b	L045-521	Relay, 120 volt	1
7c	L045-610	Gear assembly (without bearings)	1
	L045-663	Mini ball bearing	2
7d	L045-662	Eccentric shaft ass'y	1
7e	L045-612	Motor bolts	4
7f	L045-613	Motor fan	1
7g	L045-544	Fuse, 10 amp	1
7h	L045-609	Fuse holder	1
	L045-611	Power cord (not shown)	1
	L045-691	Safety decal	1
8	L045-615	Hose hook	1
9	L045-616	Cart handle (new golf type L045-666)	1
10	L045-617	Bolt	4
	L045-618	Washer	4
	L045-619	Nut	4
11	L045-620	Cart base	1
14	L045-621	Cart wheel (new golf type L045-664)	2
15	L045-622	Wheel cap (new golf type L045-665)	2
16	L045-623	Plug	2
17	L045-624	Rocker switch	1
18	L004-506	Prime valve assembly	1
19	L045-625	Return fitting	1
*20	L045-626	Packing nut (incl in L045-651 kit)	1
*21	L045-562	Upper packing	1
22	L045-627	Piston	1
*23	L045-567	S.V. ball guide	1
*24	L060-519	Ball, shaft valve	1
25	L045-628	Shaft valve seat	1
26	L060-522	Shaft valve nut	1
*27a	L045-630	Lower packing, standard	1
*27b	L045-564	Lower packing, Heavy Duty (DC3000)	1
*28	L045-631	O-ring, 1.2x.1	1
29		Inlet valve housing, super to #49	1
*30	L050-569	Ball, 7/16"	1
*31	L045-633	Seal	2
*32	L045-634	Spacer, inlet seat	1
33	L045-635	Inlet valve seat *NLA use L045-657.	1
37		Inlet valve housing, super to #49	1
38	L045-654	Yolk	1
39	L045-637	Retaining ring	1
40	L045-638	Screw, 3/8x8-32	1
41	L045-639	Washer, .50" x .18	1
42	L045-640	Dowel pin	1
43	L045-641	Pressure control knob	1
43a	L045-642	Pressure control housing	1
43b	L045-643	Pressure transducer (DC16/20) incl#43c	1
43c	L045-644	O-ring, DC2000 transducer	1
NS	L045-868	O-ring, viton (for piston inside transducer)	1
44	L045-653	Suction tube W/DC1600 screen	1
	0047752	Nylon tubing 7/8x9.5" (per foot)	.8
	L035-205	O-clamp, 15/16"	2
45	L045-645	Suction & return set *WSL	1
	L045-650	Suction tube w/o screen *WSL	1
46	L045-646	Suction screen, flat original	1
	L045-385	Suction screen (DC1600)	1
47	L045-647	Return tube	1
48	L045-648	Clip	1
49	L045-657	Inlet valve ass'y, New DC2 1/2" ball	1
*50	L045-658	Ball, 1/2"	1
*51	L045-659	O-ring (17x2)	1
52	L045-660	Inlet seat *NLA, see #49	1
53	L045-661	O-ring (14x2)	1
Packing & Repair kits:			
*54a	L045-651	HD pack kit-7/16 ball(20,21,23,24,27b,28,30,31,32)	
*54b	L045-655	HD pack kit-7/16 ball(21,23,24,27b,28,30,31,32)	
*54c	L045-656	HD pack kit-1/2 ball(21,23,24,27b,28,50,51,53)	
55	L045-649	Motor brush pair	
	L045-582	Motor brush each	
	L034-125	Packing lubricating oil, squeeze bottle	
	L050-621	Owner's manual	



Caution: only use fibre braid high pressure airless hose. Do Not use steel braid hose!

Important, following items require accurate torques:

#20	packing nut	25 ft/lbs
#26	Shaft Valve hex nut	12 ft/lbs
#29	Foot Valve housing	30 ft/lbs
#37	Inlet housing	30 ft/lbs



Specifications subject to change.